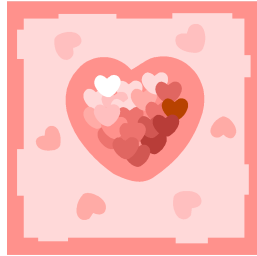


February 2023 Newsletter

Grade 2R



Dear Parents,

It is so hard to believe that we are already in the second month of 2023. I'm so excited about the growth that I have seen in all of the students in our class this year! It is particularly important at this time of the year to encourage them to continue to read every day as well as to expand their horizons in their writing. I love it when they tell me that they are writing letters, Journal entries, and creative stories at home!

On a more personal note, I wanted to let you know that I will be taking a few weeks to be at home with my family starting on Monday, February 6. At this time two years ago my daughter Sydnie passed away from cancer. Our family would appreciate all of your prayers as we continue to grieve her loss. Miss Denise Larre will be my substitute for the two weeks that I will be gone. I will be returning on Monday, February 27. Thank you all so much for your support and prayers for my family and I during this difficult time of year.

Language Arts

Reading: Please continue to read every night! Remember to share the who, what and where of the story as well as to ask lots of questions to build and maintain strong comprehension skills!

Spelling Words: The following are the spelling words for the month of February. Thank you so much for practicing these with your child throughout the week.

Jan. 31 - Feb.3 - block, plane, glass, frog, print, drum, on, they, but, at

Feb. 6-10 - smile, spin, stop, smoke, trash, twig, with, all, there, out

Feb. 13-17 - sang, bang, sing, bring, long, lung, be, have, am, do

Feb. 20-24 - NO SCHOOL

Feb. 27 - March .3 - sank, blank, rink, drink, honk, trunk, did, what, so, get



Math: We are beginning our Unit on **Patterns**. The students will be learning about pattern cores first. Then repeating and increasing patterns.

Science:

We are continuing to work through our unit entitled **Hot and Cold Temperatures**. The students are already very good at reading and writing Celcius temperatures.

Social Studies:

We have finished the Geographic unit for our three Canadian communities. We are now learning about the **cultures, traditions and languages** of these regions. The first Canadian community and its people that we will focus on will be the **Inuit of Iqaluit**.

Friend of the Week:

Our Friend of the Week program is continuing to go well!
We love seeing photos of our "Friend" and learning more about them.



Year End Field Trip:

Our trip is all booked! We will be going to the **Markerville Creamery** on **Wednesday, June 14, 2023**. I will be asking for **4 volunteers** to meet us there. A **Criminal Record check** will be necessary for volunteers, but the Vulnerable Sector check will not be required because we will be staying together as a whole class all day! Information regarding the day will be sent home when we get closer to our day. If you are interested in volunteering, please ensure that you get your Criminal Record check right now because it might take some time to process. Contact our office for more information!

Valentine's Day:

Please ensure that your child sends a Valentine for each student in the class so that some children do not feel left out.

**A class list is included below to help your child create their Valentine cards.
Your child can dress in **red or white** on this day too!**

2R Class List

Frelhyn	Kendall	Grace	Alexine
Zyller	Matteo	Zian	Gabby
Ella	Kaylee	Mila	Rodrigo
Tanner	Riley	Aleena	Aiden
Alex	Skyler	Heeva	Gage
Noeljon	Maiara	Shamar	Ellis



Important Dates for February STILL TO DO

Jan.31-Feb.3 - **Gabby** is the Friend of the Week.

Feb.3 - Hot lunch (Taco Time)

Feb.6-10 - **Ella** is the Friend of the Week.

Feb. 10 - Hot lunch (Opa)

Feb. 13-17 - **Kaylee** is the Friend of the Week.

Feb. 14 - Valentine's Day - Remember to bring Valentine cards to school

- Wear red, pink or hearts!

Feb. 15 - Pink Shirt Day - Wear a pink shirt for kindness.

Feb. 16 - Shrove Tuesday Pancake lunch - **Please send a fork and knife to school with your child that day!!**

Feb. 17 - Hot lunch (Fresh Slice)

February 20 - Family Day - NO SCHOOL

February 21 and 22 - PD Days - NO SCHOOL

February 23 and 24 - Teacher's Convention - NO SCHOOL

February 27-March 3 - **Mila** is the Friend of the Week.

Have a great February! 2R parents and kids are WONDERFUL!!

God Bless,

Cathy Ratzlaff

